

DICHROIC DOWNLIGHT

CARATTERISTICHE PRINCIPALI

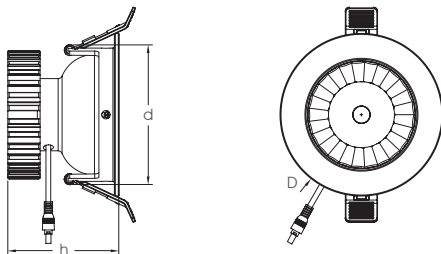
- Efficienza >100lm/W
- CRI>80 (>90 su richiesta)
- Alimentatore Flicker Free, 100-240V, PF>0.95
- Alimentatore Dali, 0/1-10V, Triac Dimmable disponibili

ASPETTATIVA DI VITA

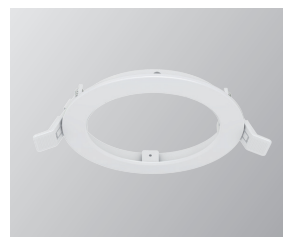
- L70B20>50000h



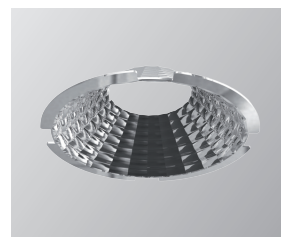
DISEGNO MECCANICO



DETTAGLI PRODOTTO



➤ Frame esterno dotato di clips per installazione in controsoffitto

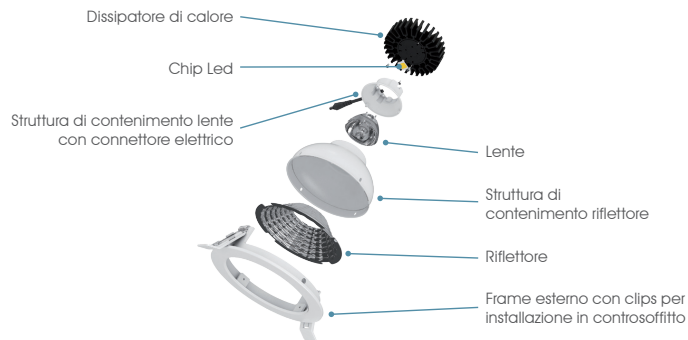


➤ Riflettore in alluminio

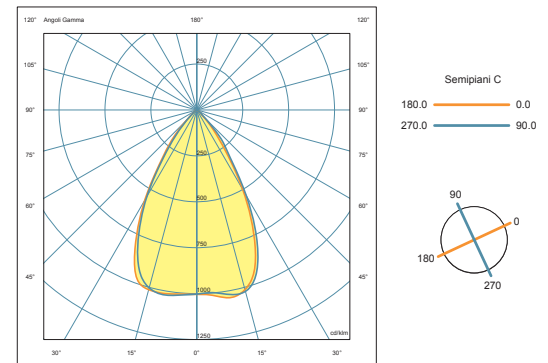


➤ Dissipatore di calore

SCOMPOSIZIONE IN PARTI DEL PRODOTTO



FOTOMETRIA



DATI TECNICI

CODICE	POTENZA	FLUSSO LUMINOSO	EFFICIENZA	TEMPERATURA DI COLORE	ANGOLO DI BEAM	DIMENSIONI [Dxdxh] mm	CUTOUT mm
VV-DCD.10.0	10W	1000lm	>100 lm/W	3000K (WW)	38°	116x100x81	100-110
VV-DCD.10.1	10W	1100lm	>110 lm/W	4000K (NW)	38°	116x100x81	100-110
VV-DCD.13.0	13W	1300lm	>100 lm/W	3000K (WW)	38°	143x128x85	128-130
VV-DCD.13.1	13W	1400lm	>108 lm/W	4000K (NW)	38°	143x128x85	128-130
VV-DCD.16.0	16W	1600lm	>100 lm/W	3000K (WW)	38°	169x152x99	152-160
VV-DCD.16.1	16W	1700lm	>106 lm/W	4000K (NW)	38°	169x152x99	152-160
VV-DCD.21.0	21W	2200lm	>104 lm/W	3000K (WW)	38°	230x210x132	210-215
VV-DCD.21.1	21W	2300lm	>109 lm/W	4000K (NW)	38°	230x210x132	210-215
VV-DCD.32.0	32W	3200lm	>100 lm/W	3000K (WW)	38°	230x210x141	210-215
VV-DCD.32.1	32W	3400lm	>106 lm/W	4000K (NW)	38°	230x210x141	210-215